

WISCONSIN'S COMMUNITY HEALTH CENTERS 2020



*Partnership Community Health Center
Appleton, WI*



Partnership Community Health Center
Appleton, WI

COMMUNITY HEALTH CENTER PROGRAM BACKGROUND

For over 50 years, the Health Resources and Services Administration (HRSA)-supported Community Health Centers have provided comprehensive primary and preventive health care services, including medical, dental, behavioral health, and substance use care, plus connections to social services. Community Health Centers are:

- Private or public not-for-profit organizations
- Located in or serving high need communities
- Governed by a patient-majority Board of Directors
- Providers of supportive services that promote access to health care
- Providers of services to everyone regardless of insurance status, with fees adjusted based on a patient's ability to pay
- Responsible for meeting performance and accountability requirements and publicly reporting clinical and financial data

WISCONSIN'S COMMUNITY HEALTH CENTERS



1 ACCESS COMMUNITY HEALTH CENTERS
Madison | Sun Prairie | Dodgeville
www.accesscommunityhealthcenters.org

2 BRIDGE COMMUNITY HEALTH CLINIC
Wausau | Antigo | Merrill
www.bridgeclinic.org

3 COMMUNITY HEALTH SYSTEMS, INC
Beloit
www.chsofwi.org

4 FAMILY HEALTH CENTER OF MARSHFIELD, INC
Black River Falls | Chippewa Falls | Ladysmith | Marshfield | Medford | Menomonie | Neillsville | Park Falls | Rhinelander | Rice Lake | Minocqua
www.familyhealthcenter.org

5 FAMILY HEALTH/LA CLINICA
Wautoma | Mauston | Beaver Dam | Friendship | Stevens Point
www.famhealth.com

6 GERALD L. IGNACE INDIAN HEALTH CENTER, INC
Milwaukee
www.gliihc.net

7 KENOSHA COMMUNITY HEALTH CENTER, INC
Kenosha | Silver Lake
www.kenoshachc.org

8 LAKE SUPERIOR COMMUNITY HEALTH CENTER
Superior | Duluth, MN | Carleton, MN
www.lschc.org

9 LAKESHORE COMMUNITY HEALTH CARE
Sheboygan | Manitowoc
www.lakeshorecommunityhc.org

10 MILWAUKEE HEALTH SERVICES, INC
Milwaukee
www.mhsl.org

11 N.E.W. COMMUNITY CLINIC
Green Bay
www.newcommunityclinic.org

12 NORTHLAKES COMMUNITY CLINIC
Ashland | Hayward | Iron River | Minong
Turtle Lake | Balsam Lake | Washburn | Birchwood | Park Falls | Lakewood | Oconto | White Lake | Hurley
www.northlakesclinic.org

13 OUTREACH COMMUNITY HEALTH CENTERS
Milwaukee
www.orchc-milw.org

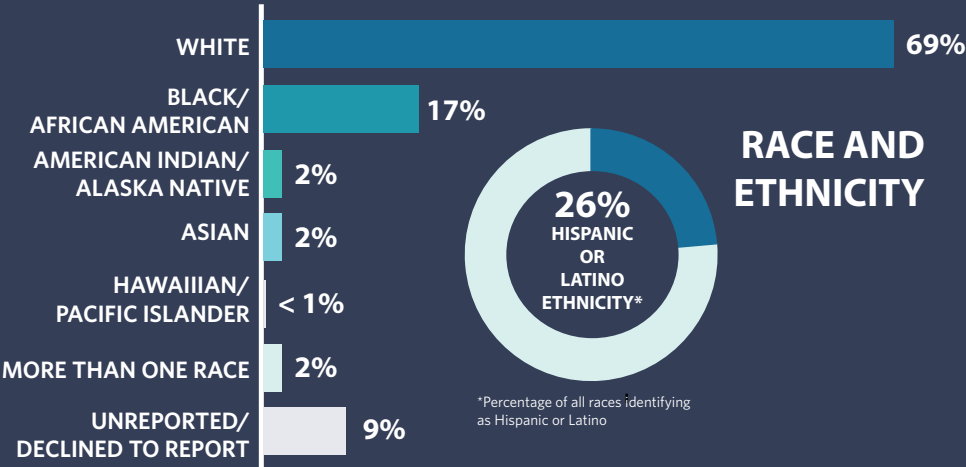
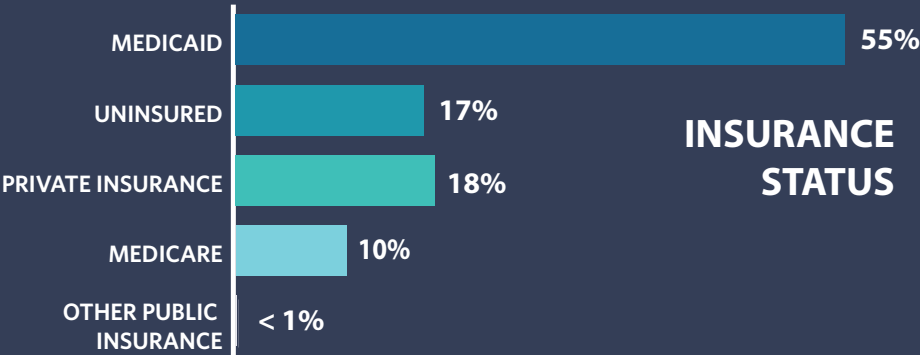
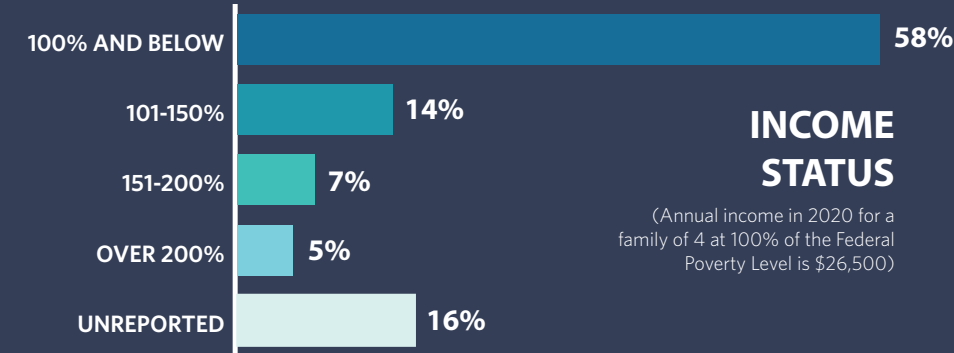
14 PARTNERSHIP COMMUNITY HEALTH CENTER
Appleton | Oshkosh | Waupaca
www.partnershipchc.org

15 PROGRESSIVE COMMUNITY HEALTH CENTERS
Milwaukee
www.progressivechc.org

16 SCENIC BLUFFS COMMUNITY HEALTH CENTERS
Cashton | Norwalk | Viroqua | Sparta | La Crosse
www.scenicbluffs.org

17 SIXTEENTH STREET COMMUNITY HEALTH CENTER
Milwaukee | Waukesha
www.sschc.org

PATIENT DEMOGRAPHICS



SPECIAL POPULATIONS

6,454
INDIVIDUALS
EXPERIENCING
HOMELESSNESS

2,195
SCHOOL-BASED
PATIENTS

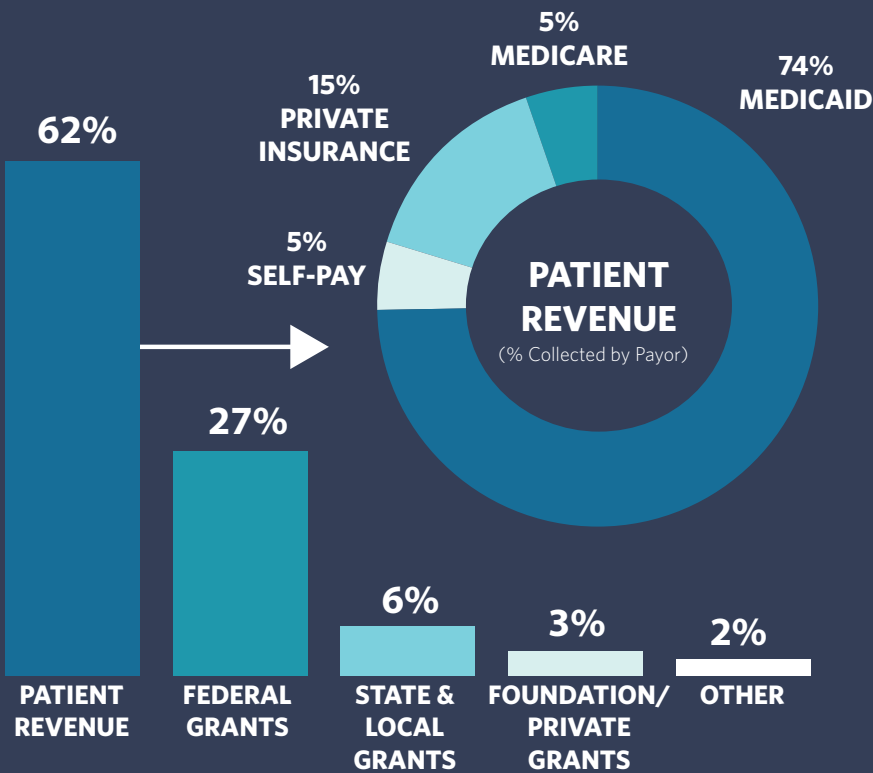
3,331
VETERANS

3,557
SEASONAL
AGRICULTURAL
WORKERS

Data Source: 2020 Health Center Program Uniform Data System (UDS). Includes 1/2 of LSCHC reported data.

REVENUE

Community Health Centers receive grant funding from HRSA, a division of the US Department of Health and Human Services, to support operations and provide sliding fee discounts to low-income, uninsured, and under-insured patients. In addition to grant revenue, Community Health Centers receive revenue from patients including self-pay, Medicaid, Medicare, and private insurance.



QUALITY OF CARE

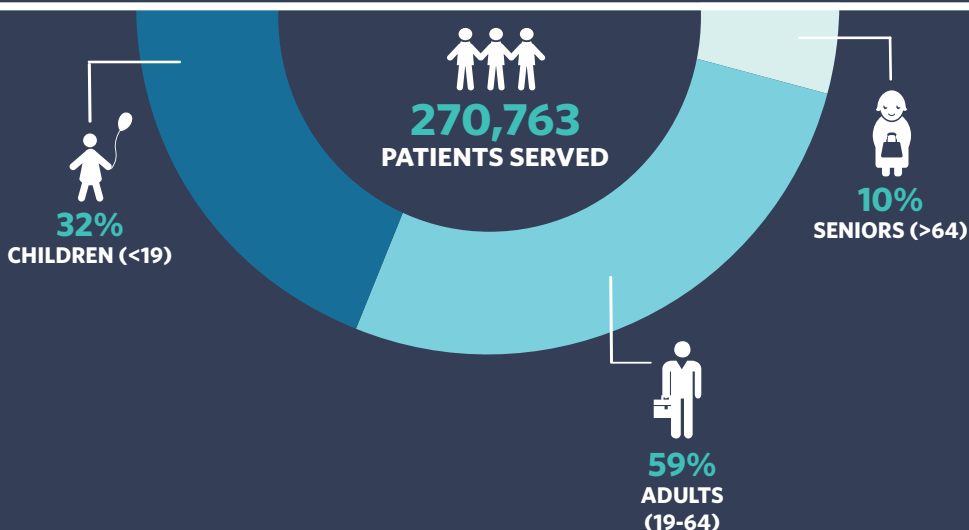
13 Wisconsin Health Centers, in 2020, were recognized as Patient-Centered Medical Homes (9 through NCQA, 2 through the Joint Commission, 2 through AAAHC, and 1 through the state of Minnesota)

100% of Wisconsin Community Health Centers use an Office of the National Coordinator for Health Information Technology-Certified Electronic Health Record (EHR)

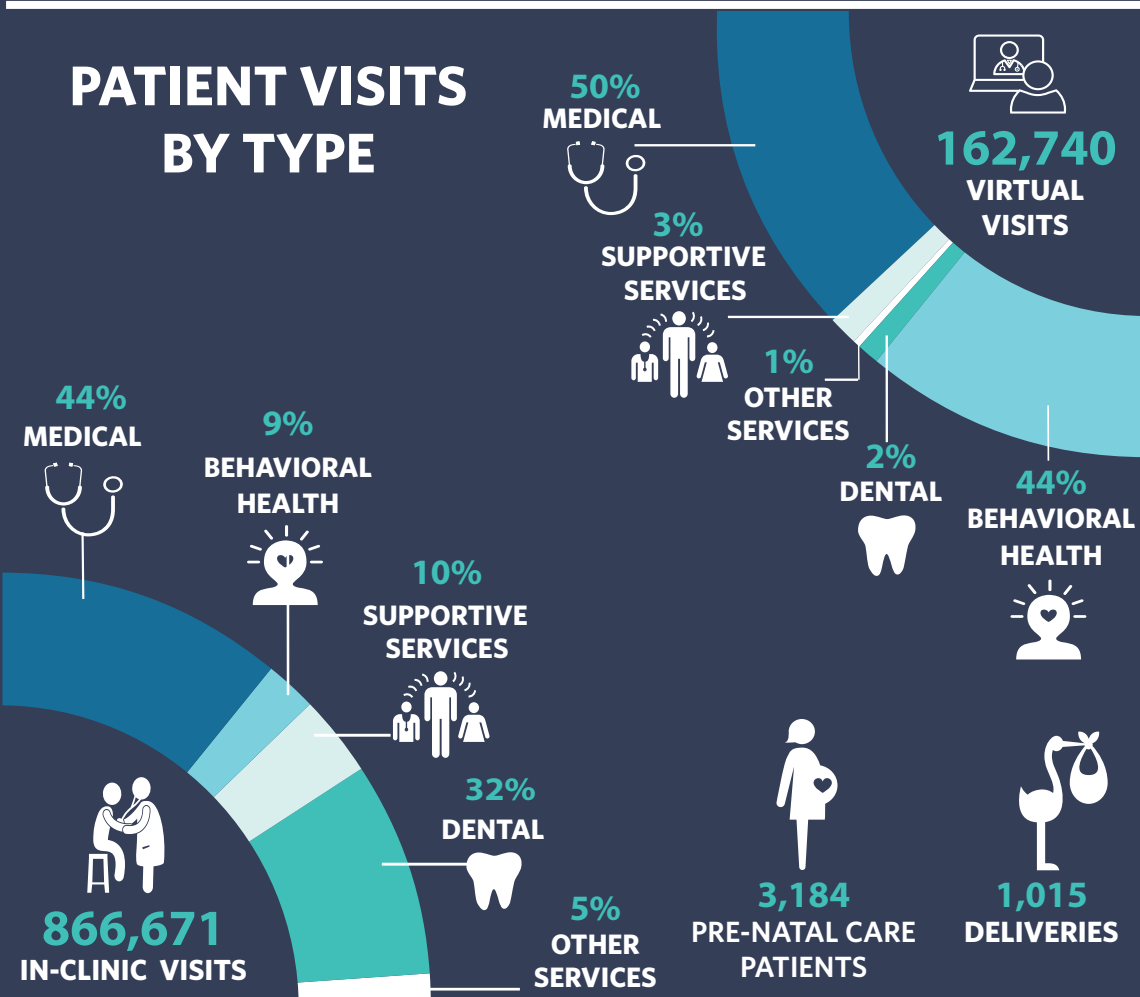
100% of Wisconsin Community Health Centers engaged in quality improvement reporting and monitoring

Data Source: 2020 Health Center Program Uniform Data System (UDS). Includes 1/2 of LSCHC reported data.

COMMUNITY HEALTH CENTERS BY THE NUMBERS



PATIENT VISITS BY TYPE



COMMUNITY HEALTH CENTERS: SITES AND STAFF



17
**COMMUNITY
HEALTH CENTER
ORGANIZATIONS**



197
**SERVICE
DELIVERY
SITES**



2,568
**EMPLOYEES
(FTE)**

2020 SPOTLIGHT

WI Community Health Centers were responsive to the needs of patients and community members during global COVID-19 pandemic.



WI CHCs provided **48,615 COVID-19 Tests**



Rapidly implemented virtual visit services,
increasing visits from **2,365 to 162,740**



Partnership Community Health Center
Appleton, WI

Data Source: 2020 Health Center Program Uniform Data System (UDS). Includes 1/2 of LSCHC reported data.

This publication was supported by the Health Resources and Services Administration (HRSA) of the U.S. Department of Health and Human Services (HHS) as part of an award totaling \$1,123,023. The contents are those of the author(s) and do not necessarily represent the official views of, nor an endorsement, by HRSA, HHS or the U.S. Government.



Houghton Falls - Echo Dells, WI
Photo Credit: Jeremy Oswald

The Wisconsin Primary Health Care Association

The mission of the Wisconsin Primary Health Care Association is to improve health through the work of Community Health Centers and their partners.

We envision a future where all individuals and communities in Wisconsin achieve their highest potential.



5202 Eastpark Blvd, Suite 109, Madison, WI 53718

www.wphca.org | 608.277.7477